



MILTECH™ 610

Compact, Portable IP67 Military Fast Ethernet Switch

PRODUCT DESCRIPTION

Ethernet is becoming the standard for IP-based components in a wide range of military and commercial land, sea, and air applications. When building communications where data prioritization is not a concern and the amount of traffic is low, unmanaged, Fast Ethernet switches can be an ideal solution.

The MILTECH 610's small size, IP67 rugged construction, and Fast Ethernet make it the ideal switching solution for command post, ground mobile and airborne applications. Its eight 10/100Mbps ports are plug-n-play compatible with all Ethernet equipment, providing network connectivity for most portable Ethernet devices, including:

- Rugged computers
- Navigation devices
- Voice and video communication systems
- IP-based sensors
- Battlefield communication C4ISR
- Combat vehicles, avionic and shipboard systems

The MILTECH 610 a robust unmanaged switch designed for harsh environments that require LAN connectivity between IP-enabled computers and peripherals.

The MILTECH 610 operates on readily available 24VDC power and supports MIL-STD1275 so that it may be powered directly from any available battery in the field. The 610 is equipped with 8 LED link status indicator lights.

The MILTECH's mechanical packaging enhancements, including ruggedized D38999 circular connectors, is designed for MIL-STD-810F airborne and ground environmental compliance and high reliability. Leveraging best-in-class switching technology from Techaya, the MILTECH 610 serves as a robust commercial off-the-shelf (COTS) solution for rugged LAN connectivity.

SPECIFICATIONS

ETHERNET PORTS:	<ul style="list-style-type: none"> • 8 x switched 10/100 (Fast Ethernet) ports
NETWORKING:	<ul style="list-style-type: none"> • Full wire-speed forwarding rate • Store-and-forward mechanism • Auto MDI-II, MDI-X • Auto-Negotiation Protocol • Address Look-Up
CONNECTORS:	<ul style="list-style-type: none"> • Power Connector: D38999/24WA98PA • LAN Connector: D38999/24WA355N • Indication Per Port (Link/Activity)
CHASSIS:	<ul style="list-style-type: none"> • Machined rugged aluminum • Conductively cooled w/custom internal heat-sinks • Ingress protection against sand, dust and moisture • Anodize Coating, MIL-A-8625, Type II, Class 2
STANDARDS:	<ul style="list-style-type: none"> • MILSTD-1275 MILSTD-704A MILSTD-461E MILSTD-810F GM IP67



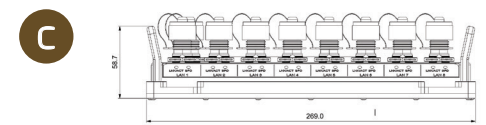
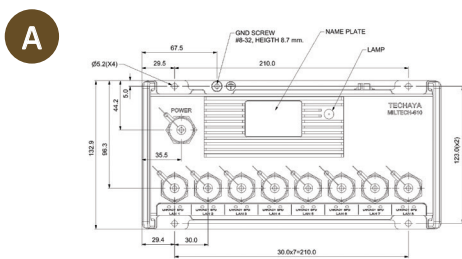


MILTECH™ 610

Compact, Portable IP67 Military Fast Ethernet Switch

SPECIFICATIONS

PERFORMANCE:	<ul style="list-style-type: none"> • 128K Byte of SRAM for Frame Buffering • 2.0Gbps High-Performance Memory Bandwidth • 2LED indication (Speed, Link/Activity) per port • Wire-Speed Reception and Transmission • Integrated Address Look-Up Engine • Automatic Address Learning
STANDARDS COMPLIANCE:	<ul style="list-style-type: none"> • IEEE 802.3 10 Mbps 10BASE-T (Ethernet) • IEEE 802.3u 100BASE-TX 100 Mbps (Fast Ethernet) • IEEE 802.3x Flow Control
POWER:	<ul style="list-style-type: none"> • MIL-STD-1275B & MIL-STD 704A Surge and Spike protection • Voltage Input: 24Vdc Nominal (18-32V) • Power Consumption: 2.8W Typical • Chassis grounding
ELECTROMAGNETIC:	<ul style="list-style-type: none"> • MIL-STD-461E Electromagnetic compatibility • RE-02, R5-03
SHOCK/VIBRATION/HUMIDITY:	<ul style="list-style-type: none"> • MIL-STD-810F 501.4I 501.4II 502.4I 502.4II 507.4 500.4II 514 516I 516Vi 514.5 512.4. • IP67
PHYSICAL:	<ul style="list-style-type: none"> • Dimensions: 269mm (L) x 133mm (W) x 61mm (H), including connectors • Dimensions: 10.6" (L) x 5.2" (W) x 2.4" (H), including connectors • Weight: 1.5kg
INSTALLATION:	<ul style="list-style-type: none"> • Four 4 x 5.2 mounting holes on bottom for mounting to any flat surface • Carrying handles - Optional
COOLING:	<ul style="list-style-type: none"> • No Moving Parts. Passive Cooling
OPERATING TEMP:	<ul style="list-style-type: none"> • -45°C to +85°C (-49°F to +185°F) – Cold Start-Up
STORAGE TEMP:	<ul style="list-style-type: none"> • -45°C to +85°C (-49°F to +185°F)



*All measurements are in millimeters

ORDERING INFORMATION

PART NUMBER	DESCRIPTION
1-610-000	<ul style="list-style-type: none"> • MILTECH610, military Rugged, 8 x 10/100TX, Switch
2-CBL610PW3M	<ul style="list-style-type: none"> • Power cable MILTECH-610, MIL-D38999 Connector, 3 meter length
2-CBL708LN3M	<ul style="list-style-type: none"> • LAN cable for MILTECH 610, MIL-D38999 to RJ45 connector, 3 Meters length
800-H-0610-000	<ul style="list-style-type: none"> • Carrying Handlets Kit for MILTECH610