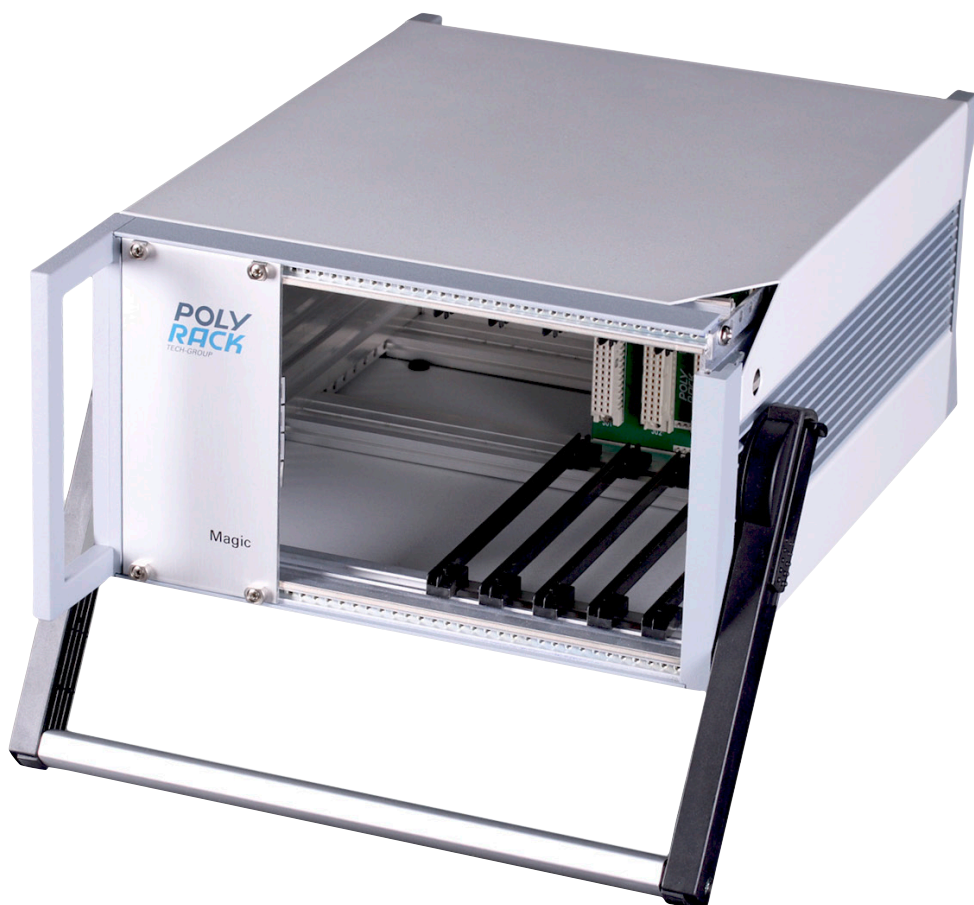


#01 MAGIC CASE CASES



INTEGRYS

Connecting Technology & Innovation

Toll Free: 888-509-8455, Email: clientservice@integrys.com
www.integrys.com

leading.technology

**POLY
RACK**
TECH-GROUP

#01 CASES

MAGIC CASE

// Product Information



// Product information

The Magic case series features an esthetically pleasing design, functionality and stability. The frame construction with side extrusions is self-supporting. The top and bottom covers can be removed individually, thus ensuring excellent accessibility.

Designed to accommodate plug-in modules and non-standard components, the cases serve as desktop cases or, in conjunction with the 19" mounting brackets, as rackmount cases in 19" racks.

Heat is dissipated via ventilation slits in the region of the card cage and via the rear panel. The ribbed structure of the side extrusions supports heat dissipation and brings out the design.

The cases are suitable for use under EMC criteria and can be upgraded as required with additional gasketing material.

Standards

- Mounting dimensions in accordance with IEC 60297-2
- IP20 rating in accordance with IEC 60529

Notes

- "IEEE" version: Front rail(s) with pitch perforation according to IEEE 1101.10
- Rails are positioned in 10 mm increments
- Grounding tabs in top/bottom covers;
- Grounding tabs for side extrusions are included in the assembly kit.

// Basic units

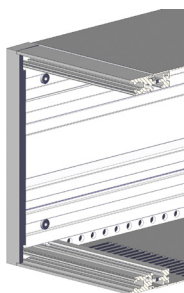
The Magic series cases are available in two basic versions. The corner brackets and the 19" mounting brackets are not supplied as standard; these must be ordered separately.

The model with the carrying/support handle is ideal for use as a desktop case or for mobile use. Further configurations can be made by combining different components as required.

// Features of the basic units

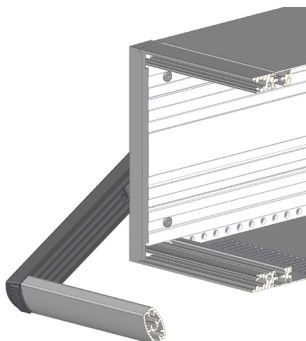
Standard

"Standard corner brackets – Magic" are not included in the scope of delivery of the basic units.



With carrying/support handle

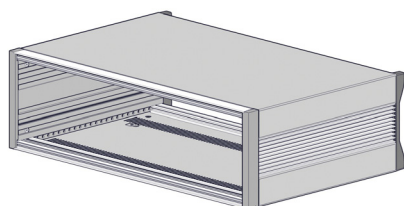
"Standard corner brackets – Magic" are not included in the scope of delivery of the basic units.



#01 CASES

MAGIC CASE

// Product Information



// Magic Case Standard

Scope of delivery

Bottom cover	1 pc
Top cover	1 pc
Front rail	2 pcs
Side extrusion	2 pcs
Rear rail with M3 thread	2 pcs
Corner bracket	2 pcs
Plug-in foot $\varnothing 12 \times 3$ mm	4 pcs
Assembly kit	1 pc

Delivery Form

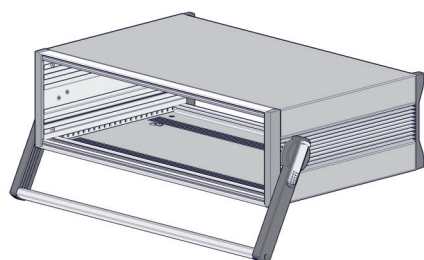
Individual components in units for self-assembly

Notes

- Corner brackets and 19" mounting brackets for assembly in 19" racks must be ordered separately
- Conversion kits (choice of B, C or E) and threaded inserts must be ordered separately
- Max. tightening torque for "rear rail with M3 thread" is 0.75 Nm

Ordering table

H	W	H in mm	W1 in mm	D=279 mm	D=459 mm	D=439 mm
2 U	42 HP	88.1	235	22 10 00 01	22 10 00 04	–
2 U	84 HP	88.1	449	22 10 00 03	22 10 00 06	–
3 U	42 HP	132.5	235	22 10 00 10	22 10 00 13	–
3 U	84 HP	132.5	449	22 10 00 12	22 10 00 15	22 10 00 18
4 U	42 HP	177	235	22 10 00 19	22 10 00 22	–
4 U	84 HP	177	449	22 10 00 21	22 10 00 24	22 10 00 27
6 U	42 HP	266	235	22 10 00 28	22 10 00 31	–
6 U	84 HP	266	449	22 10 00 30	22 10 00 33	22 10 00 36



// 19" subrack Future IEEE, EMC fabric shielding concept

Scope of delivery

Bottom cover	1 pc
Top cover	1 pc
Front rail	2 pcs
Side extrusion	2 pcs
Rear rail with M3 thread	2 pcs
Corner bracket	2 pcs
Carrying/support handle	1 pc
Plug-in foot $\varnothing 12 \times 3$ mm	4 pcs
Assembly kit	1 pc

Delivery Form

Individual components in units for self-assembly

Notes

- Corner brackets must be ordered separately
- Conversion kits (choice of B, C or E) and threaded inserts must be ordered separately
- Max. tightening torque for "rear rail with M3 thread" is 0.75 Nm
- Max. carrying load of the handle is 30 kg

Ordering table

H	W	H in mm	W1 in mm	D=279 mm	D=459 mm	D=439 mm
2 U	42 HP	88.1	235	22 10 00 50	22 10 00 53	–
2 U	84 HP	88.1	449	22 10 00 52	22 10 00 55	–
3 U	42 HP	132.5	235	22 10 00 59	22 10 00 62	–
3 U	84 HP	132.5	449	22 10 00 61	22 10 00 64	22 10 00 67
4 U	42 HP	177	235	22 10 00 68	22 10 00 71	–
4 U	84 HP	177	449	22 10 00 70	22 10 00 73	22 10 00 76
6 U	42 HP	266	235	22 10 00 77	22 10 00 80	–
6 U	84 HP	266	449	22 10 00 79	22 10 00 82	22 10 00 85