



Connect Tech Inc.
Embedded Computing Experts

Jetson TX2/TX1 EMBEDDED ENCLOSURE



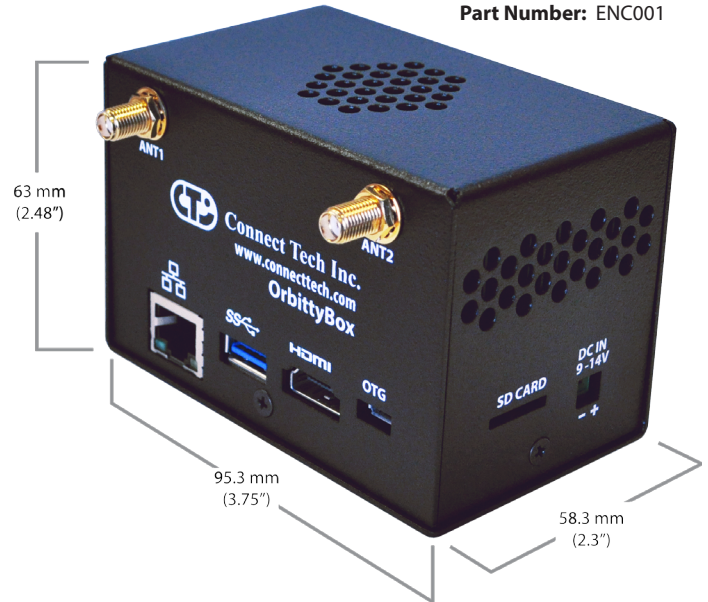
Product Name: OrbittyBox
Part Number: ENC001

OrbittyBox

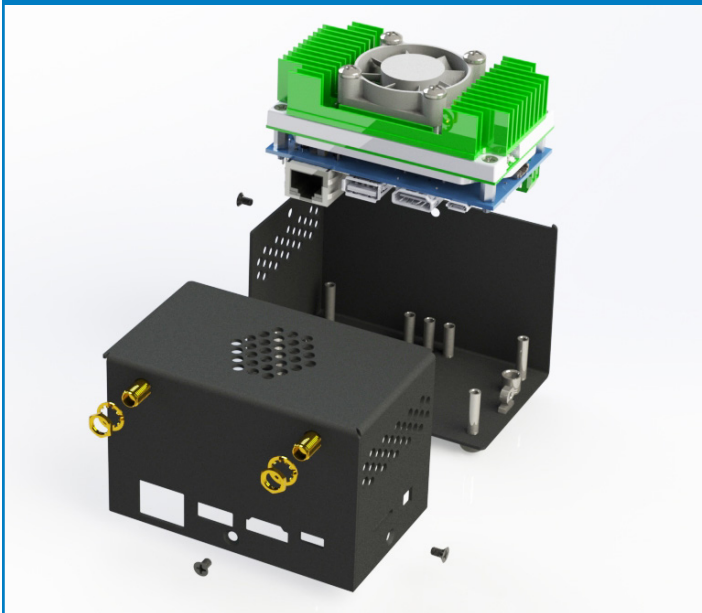
Connect Tech's OrbittyBox easily turns the Orbitty carrier into a complete packaged NVIDIA® Jetson™ TX2/TX1 system.

This two-piece metal enclosure is designed to house an Orbitty Carrier, NVIDIA® Jetson™ TX2 or Jetson TX1 module, and Connect Tech's active heat sink.

The enclosure is sold as an accessory, allowing it to be integrated with existing customer product. Two-piece construction for ease of installation and assembly.



BUILD YOUR ORBITTY ENCLOSURE

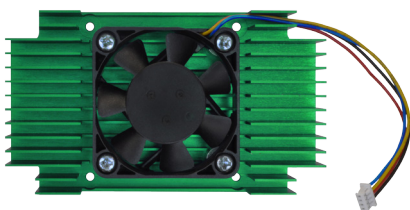


Order No. ENC001

FEATURES

- ✓ Specifically designed for use with Jetson TX2/TX1 and Orbitty Carrier
- ✓ 2-Piece Metal Enclosure
- ✓ Dimensions: 95.3mm x 63mm x 58.3mm (3.75" x 2.48" x 2.30") (WxHxD)
- ✓ Weight: Enclosure + Fasteners - 113g (0.25lb) (Orbitty, Module, Heat Sink - 204g [0.45lb])
- ✓ Optional 2x SMA Antenna Connectors

Active Heat Sink



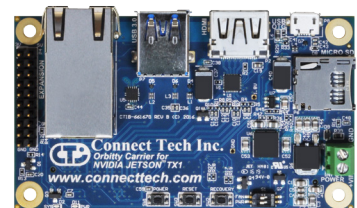
Order No. XHG302

NVIDIA Jetson TX2 or TX1



Order No. CMG503-21 / CMG503

Orbitty Carrier Board



Order No. ASG003



INTEGRYS
Connecting Technology & Innovation

Toll Free: 888-509-8455, Email: clientservice@integrsys.com
www.integrsys.com

RoHS

Specifications subject to change without notice.
©2018, Connect Tech Inc. All trademarks are property of their respective holder.

CTIX-00480.0.00 - April 3, 2018