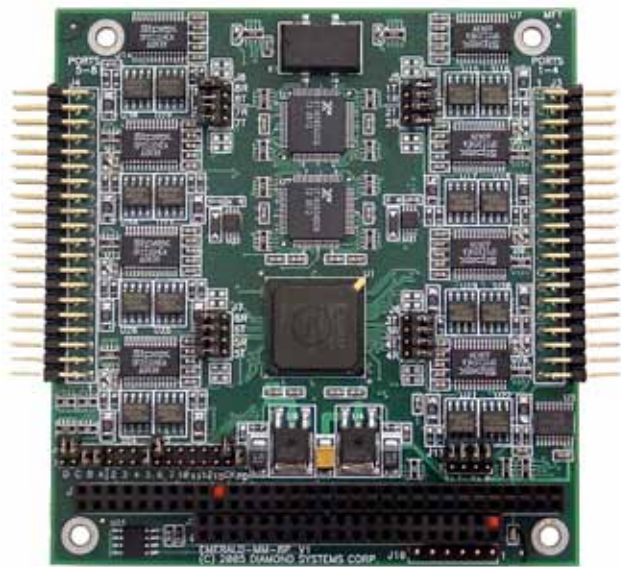


## 8-Port RS-232/422/485 PC/104™ Module



### Key Features

- ◆ 8 serial ports, RS-232/422/485 protocols
- ◆ Software configurable protocols, addresses, and interrupts
- ◆ 16C654 UARTs with 64-byte FIFOs
- ◆ Up to 460.8Kbps maximum baud rates
- ◆ Supports interrupt sharing
- ◆ EEPROM storage of configuration data

### SPECIFICATIONS

<b>Serial ports</b>	Eight
<b>Protocols</b>	RS-232/422/485 supported
<b>Max baud rate</b>	460.8Kbps
<b>Communications</b>	Five, six, seven or eight data bits Even, odd, or no parity
<b>Base UART</b>	16C654
<b>FIFO</b>	64 bytes
<b>Protocol configuration</b>	Software programmable
<b>Address / interrupt config.</b>	Software programmable
<b>Short protection</b>	Continuous, all outputs
<b>DIO lines</b>	8 programmable digital I/O lines
<b>Bus interface</b>	PC/104 (ISA)
<b>Power</b>	+5VDC ±10%
<b>Operating temp.</b>	-40°C to +85°C (-40°F to +185°F)
<b>Weight</b>	2.5oz (71g)

### ORDERING INFORMATION

<b>EMM-8P-XT</b>	8 configurable RS-232/422/485 serial port PC/104 module
<b>C-DB9M-4</b>	Quad serial port cable

### Product Overview

Emerald-MM-8P offers 8 multi-protocol serial ports on a single PC/104 module with complete software configurability via the operating system. Each port can be individually selected for RS-232, RS-422, or RS-485 under software control. Both local-echo and non-local-echo modes are supported for RS-485. I/O addresses and interrupt levels are also programmable, with interrupt sharing available for any number of ports. Each port may further be enabled or disabled in software. All configuration data is stored in an on-board EEPROM that is loaded automatically on power-up.

Emerald-MM-8P offers 8 convenient digital I/O lines. The direction of each line is independently programmable. Diamond's Universal Driver software provides software support for these digital I/O lines.

Two I/O headers are provided, with four serial ports and four digital I/O lines on each header. The board operates on +5V only, eliminating the need for a +12V supply that is often required for serial port operation.



**INTEGRYS**  
Connecting Technology & Innovation

1-888-509-8455, [clientservice@integrys.com](mailto:clientservice@integrys.com)  
[www.integrys.com](http://www.integrys.com)