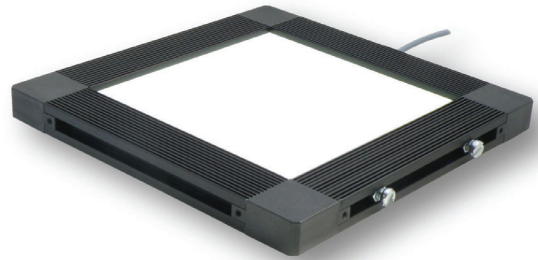





Expandable

Product Highlights

- 30% brighter than same size surface mount light
- Uniform illumination and low heat output
- Available in 1" x 1" increments up to 12" x 12".

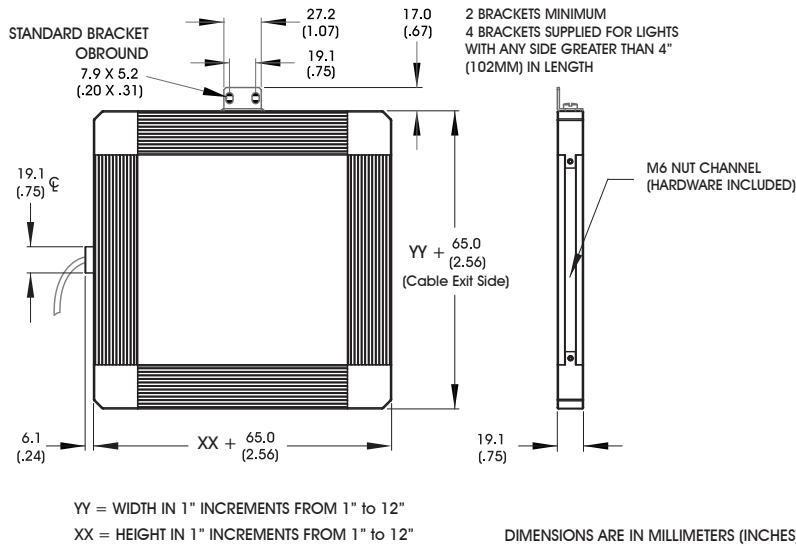


General Specifications

	Color	24v Current	All Other Controls
Electrical Specifications	625	0.133 A per 1 inches	0.062 A Max per 1 inches
	455, 520, WHI	0.133 A per 1 inches	0.103 A Max per 1 inches
	850	0.06 A per 1 inches	0.05 A Max per 1 inches
Normal Operating Temperature	0 - 60°C		
Weight (g)	Varies by size.		
Standard Cable Information	Up to 2 meters (80") long - 105°C rated PVC jacket, foil shield with drain.		
Photobiological Risk Factor IEC 62471	Group 1 (Low-Risk) Applicable Wavelengths: 470, 520, 625, WHI Exempt Applicable Wavelengths: 850		
Compliance			
IP Rating	IP50		
Lumen Maintenance	L70 = 50,000 hours		

CX 2D Expandable Series

Mechanical Specifications



Part Number Key

Model	Height	Width (Cable Side)	—	Spectral Wavelength	Connector/Control	—	Alternative Connector
CX	XX	YY	—	XXX	XX	—	XXX
CX	in 1" increments from 1" to 12"	in 1" increments from 1" to 12"		(blue) 455 (green) 530 (red) 625 (infra-red) 850 (white) WHI	C1 C5 IC I3 I3S		M12 ¹
Ex: CX0312-455C1 CX0608-625IC-M12					¹ Available with IC, I3 and I3S		

Stock Product: *shipped next day*
CX0404-WHIIC

Build to Order:
Red & White: *Shipped Within Two Weeks*
Blue & Green: *Four Weeks*

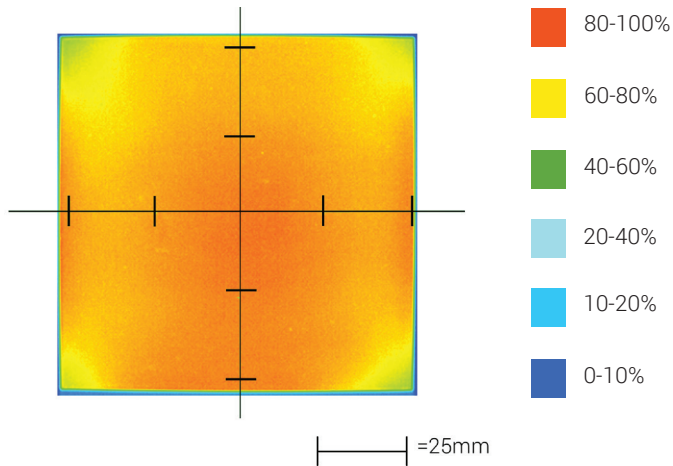
Connector | Control Options

C1 Connector	C5 Connector	IC	I3	I3S
For use with: DCS Series Controllers	For use with: Pulsar 320 Strobe Controller.	Continous in-line controller Powered with: 24V power supply	Combination strobe/continous in-line controller Powered with: 24V power supply	Default-OFF strobe/continous in-line controller Powered with: 24V power supply

CX 2D Expandable Series

Optical Performance

Intensity Distribution



Optical measurement taken using CX0404-WHIIC

Area of Illuminance & Intensity

Working Area (FWHM)
@ Working Distance

Light Output

99 X 99 (mm)
@surface

Irradiance (W/M²): Min 48; Typ 57
Illuminance (kLux): Min 18.8; Typ 22.2

Operation and Wiring

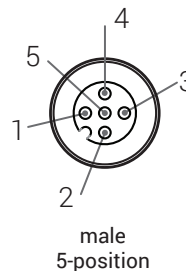
ICS 2 (IC)

Pin (M12)	Function	Wire Color
1	+24 VDC	Brown
2	GHI	White
3	GND	Blue
4	GLO	Black
5	N/A	N/A

ICS 3 (I3 and I3S)

Pin (M12)	Function	Wire Color
1	+24 VDC	Brown
2	Reserved	White
3	GND	Blue
4	PNP/Active High Trigger	Black
5	0-10 VDC Analog Control	Gray

Optional M12 Pinout



CX 2D Expandable Series

Warranty Information

Every Advanced illumination, Inc. (Ai) product is thoroughly inspected and tested before leaving the factory. Products are warranted to be free of defects in workmanship and materials for a period of two years from the original date of purchase. Should a defect develop during this period, please contact Ai Customer Service or your Ai distributor for a Return Merchandise Authorization (RMA), and return the complete product, freight prepaid, to Ai. If a defect is found, Ai will - at our discretion - repair or replace the product without charge. Ai claims no liability for any implied warranties, including "merchantability" and "fitness for a specific purpose."

Electromagnetic Compatibility

This product was tested and complies with the regulatory requirements and limits for electromagnetic compatibility (EMC) as stated in the product specifications. These requirements and limits are designed to provide reasonable protection against harmful interference only when the product is operated in its intended industrial electromagnetic environment. To minimize the potential for electromagnetic interference or unacceptable performance degradation, install and use this product in strict accordance with the instructions in the product documentation.

Customer Service

For information on existing orders, or to make an order adjustment, contact us Monday through Friday 8:00 am to 5:00 pm, EST or send an email to orders@advill.com.

Company Information

Advanced Illumination

440 State Garage Road, Rochester VT. 05767

Phone: 802.767.3830

Fax: 802.767.3831

Email: info@advancedillumination.com

Web: advancedillumination.com

© 2015 Advanced Illumination Inc. All rights reserved