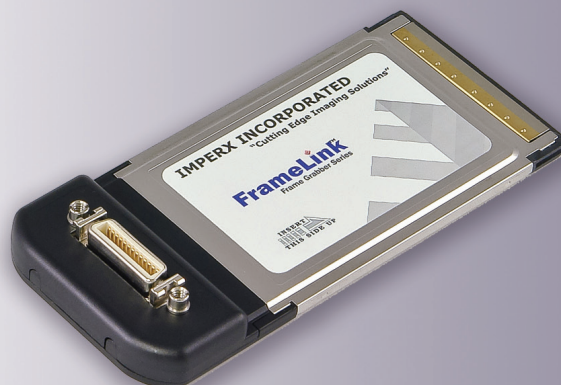


Cardbus Camera Link Video Capture Card



Framelink Cardbus Card (VCE-CLB01)

Acquisition from a single base camera.

IMPERX Framelink Cardbus is a professional level video capture card that enables users to view and store in real time mega pixel video images from Camera Link sources onto laptop computers. The Framelink Cardbus is capable of capturing single or multiple frames and standard AVI clips from any base Camera Link compliant video source. Each captured frame can be stamped with a user message along with the date and time of capture. IMPERX Framelink Cardbus VCE-CLB01 comes with easy to use camera configuration software for fast integration into demanding machine vision environments.

- PCMCIA Cardbus interface
- Small form factor PCMCIA Type II
- Intelligent scatter/gather DMA for fast, efficient use of PCI bus bandwidth
- On-board memory for fast image acquisition
- Base Camera Link compliant



APPLICATIONS

Aerial Mapping
Aerial Robots: Military, Police
Aerospace
Agriculture
Automation

Automotive
Biometrics
Broadcasting
Printed Circuit Board (PCB)
Electronics
Energy/Solar/Wind Power

Flat Panel Inspection
Food/Beverage
Homeland Security
Law Enforcement
Intelligent Traffic Systems (ITS)
Medical Devices/Imaging

Metrology
Microscopy
Military/Defense
Pharmaceuticals
Particle Image Velocimetry (PIV)
Radiology

Robotics
Scientific Apps
Surveillance
Semiconductors
Transportation
Textile/Apparel

Cardbus Camera Link VCE-CLB01 Specifications

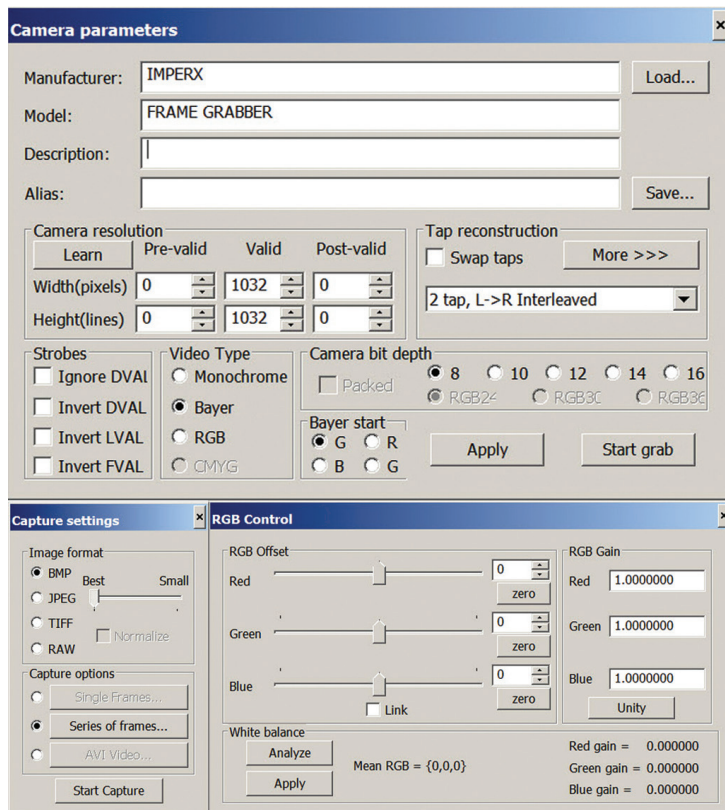
Features	PCMCIA Cardbus 8.0 compliant
	32-bit bus operating at 33MHz
	256 Mbits onboard memory (two banks)
	Plug-and-play with hot insertion and removal
	Base Camera Link compliant
	Selectable window sizes
	Adjustable RGB brightness level (256 steps each color)
	Bayer pattern interpolation
	Captures single/ multiple frames or AVI clips
	Normal or delay capture
	Date, time and text overlay
	BMP, TIFF or adjustable JPEG file format
Software	Image viewer with DVR controls
	Application program: Full featured, intuitive, easy to use GUI
	Drivers: Win 7/XP/Vista 32 bit, DirectX, Labview, Matlab, Halcon, MIL
	SDK: C/C++, COM, .NET, ActiveX—all with sample source code

Video Source	Base CameraLink <ul style="list-style-type: none"> • Uses a standard MDR connector • 28 data inputs • 4 LVDS (RS644) outputs – CC1 to CC4 • RS232 serial interface • Clock input – 20MHz to 66MHz
Video Format	Up to 16 mega pixels resolution 1x8, 2x8, 1x10, 2x10, 1x12, 2x12, 1x14, 1x16 and 3x8 (RGB) Monochrome, Bayer or RGB color
Power	3.3V DC +/-5%, 160 mA steady, 360 mA inrush 0.5W constant power
Environmental	Operating temperature: 0°C to 65°C Relative humidity: 90% non-condensing
Regulatory	FCC 15 part B, CE, RoHS
Mechanical	PCMCIA Type II card Weight 1.25 oz., 45g

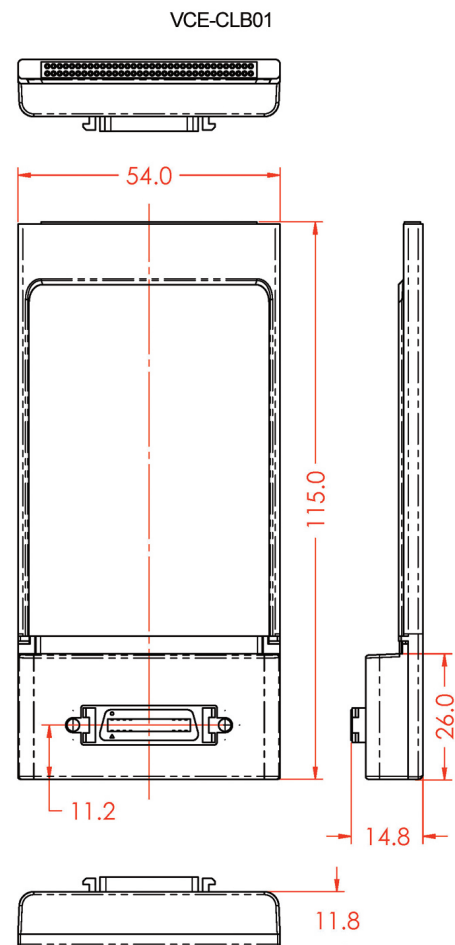
Order: VCE-CLB01

For specific details and ordering information, consult the FrameLink user's manual or contact IMPERX at sales@imperx.com.

Software



Mechanical Dimensions



IMPERX | 6421 Congress Avenue | Boca Raton | FL 33487 | USA
Phone: +1-561-989-0006 | 1-866-849-1662 | Fax: +1-561-989-0045
www.imperx.com | sales@imperx.com

Copyright © 2011, Imperx, Inc. Product information subject to change without notice. Rev. 2, 10/2011

